



AeroFlow[®]

Warmth - when it matters



THERMOTEC.AG
E-WÄRME CLEVER GENUTZT



Individual manufacture of the highest quality

“Made in Germany” is for us more than just a slogan. It is our commitment and we always aim to manufacture high-quality products that satisfy their users for many years, with classic design and lasting quality. To achieve this objective, we intentionally refrain from outsourcing or using subcontractors. Each individual stage of production is subject to constant quality control. By working together with scientific institutes, we can guarantee that we always use state-of-the-art technologies. Creative research and development, modern technologies and qualified manpower are behind the name Thermotec.



Better heat diffusion
thanks to one piece
lamellas

Stability through
welded covers
and side panels

Bimetal
switch and
cables in
shrink tube

Full-surface
fireclay core with
separate heating zones

AeroFlow® radiators

a successful in-house development
by Thermotec AG

We have been manufacturing efficient electric radiators for more than 20 years.

The radiator technology is the result of many years of research and development work. The technology combines improved heat storage with an optimized heat-flow concept. Together, both components create a warm and cosy indoor climate and, at the same time, help to save on energy costs. Fireclay heat bricks, specially developed for Thermotec store heat particularly well and keep the radiator at a constant temperature, without needing to re-heat. We improved heat transfer from the heat bricks to the housing, using a manufacturing process that we have developed specially. The radiator heats up particularly quickly and evenly as a result. Furthermore, flow-optimised ribs reduce circulation speed with a higher air flow rate. The result: Less dust in the air and faster and more even heating.



AeroFlow® Comfort

Long-lasting, good looking warmth

Radiators from Thermotec doesn't just offer state-of-the-art technology and efficient heating. It also stands out because of its modern appearance, top quality and long-term warranty. All the appliances have a high-quality powder coating that makes cleaning them easier.

Two variants with different features are available to satisfy every requirement. Easy unpacking, connecting and enjoying the warmth or convenient programming of different radiators in different temperature zones that can even be controlled with an app.

Practical: all of the end panels, with thermostat, are easy to replace. The accessories are also based on an easily assembled plug-in system.





Our latest creation

Take advantage of three control options with just one controller. Whether manual temperature control, setting up an efficient schedule directly on the device or the smart heating control via app, this controller offers the right option for every user.



FlexiSmart

Three options - one controller

1. Manual control

Based on the classic rotary knob, you can set the desired room temperature directly on the radiator. The built-in temperature sensor switches off the heating after reaching the target temperature.

2. Create a heating plan on the device

An integrated programmable digital thermostat allows convenient and efficient control of your storage heater without installation effort. For each day of the week, set a desired comfort temperature, night lowering temperature or frost protection. Doing so, you can individually adjust the heating on and off times to suit your personal daily routine and enjoy heating comfort of a special kind.

3. App-control

The built-in thermostat can be extended with a Gateway, which can be paired to the router. In addition, it is possible to take control via smartphone and tablet PC with the help of a free app.

Easy to use

Individual adjust your heating

Smart control via smartphone / tablet PC

FlexiComfortApp

Wireless thermostat

Wireless control

Using a wireless thermostat is an extremely convenient way to control your heating. The X3D app-compatible wireless room controller, which can be positioned flexibly in the room or on the wall, even enables you to control several radiators in the room. The wireless room controller shows you the current room temperature on a large display and allows you to remotely control your radiators. With a simple +/- setting, as well as programmable day or week settings, the AeroFlow® electric radiator with wireless controller fits perfectly into your everyday life.

App control

X3D wireless thermostat + TYDOM 1.0 gateway

The X3D wireless thermostat is expandable with a home automation interface (gateway) that can be linked with the router. Control via smartphone and tablet, using a free app, is also possible, for convenient wireless control.



Easy to use

Several radiators programmable

App control via smartphone/ tablet PC

Accessories



Wireless thermostat X3D



Web connector TYDOM 1.0 (Gateway) for X3D



cleaning brush



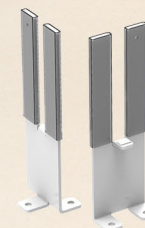
Gateway for FlexiSmart



Base



Castors



Screwable base



Towel rail

DESIGN COVER

Appliance types

FlexiComfortApp

Wireless control (wireless thermostat X3D not included)

App control (Tydom 1.0 not included)

FlexiSmart

App control (Gateway not included)

Product	Watt	Dimensions (mm) WxHxD	KG	Room size
MINI	650	380x610x90	17	4-9 m ²
COMPACT	1300	680x610x90	30	10-20 m ²
MIDI	1950	980x610x90	42	15-30 m ²
MAXI	2450	1280x610x90	55	20-40 m ²
SLIM TALL	1600	380x1250x90	34	8-16 m ²
SLIM	1200	980x325x90	24	8-16 m ²
SLIM	1600	1275x325x90	30	10-20 m ²
SLIM	2000	1580x325x90	36	12-25 m ²

* average insulation and normal room height